

STEELCUTTER

CC420S

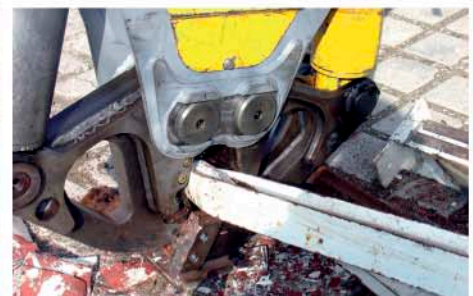
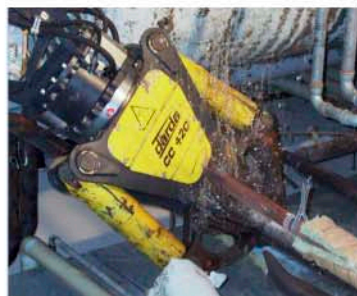
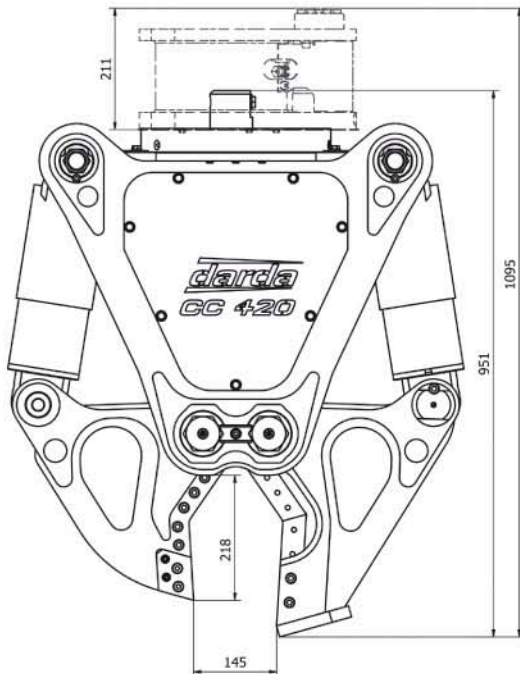


**Sturdy and compact
with strong cut!**

Specifications CC 420 S

Measurements		
Total length ^{1,2}	1095 mm	43 inches
Total width ¹	794 mm	31 1/4 inches
Total height	330 mm	13 1/2 inches
Opening width max.	145 mm	5 3/4 inches
Cutting depth, approx.	220 mm	8 1/2 inches
Weights		
Total weight with hydr. rotary drive and mounting plate, approx.	300 kg	661 lbs
Total weight with hydr. rotary drive, without mounting plate, approx.	275 kg	606 lbs
Recommended weight of carrier ³	3,5 - 8 t	7716 - 13228 lbs
Hydraulics		
Minimum pressure	17,5 MPa (175 bar)	2538 psi
Maximum pressure	27,0 MPa (270 bar)	3910 psi
Working pressure	50,0 MPa (500 bar)	7251 psi
Maximum oil flow	100 l/min	26,4 US gal/min
Performance (at input pressure > 17,5 MPa (175 bar))		
Cutting force ⁴	740 kN (75,4 t)	166358 lbf
Time to close ⁵	ca. 2,3 s	ca. 2,3 s
Time to open ⁵	ca. 1,8 s	ca. 1,8 s
Cutting capacity (Selection of profiles max.)		
I-profile DIN 1025 - S235JR - IPE 120		
U-profile DIN 1026 - S235 JO - U-140		
T-profile EN 10055 - T20-Stahl - S235JR		
Pipe DIN 2458 - S235JR - 139,4 x 8		

¹ When completely extended ² Without mounting plate, with rotary drive ³ Depends on carrying capacity table of the mini-excavator manufacturer ⁴ Force in the middle of the cutters ⁵ With an oil flow of approx. 15 l/min. (Mounting plates for different carriers on request)



darda

We've got the power.

Darda GmbH

Im Tal 1

Fon + 49 (0) 77 02 / 43 91 - 0

Fax + 49 (0) 77 02 / 43 91 - 12

info@darda.de

www.darda.de

Our distributor: