

BROKK

800 NEW 2011!
Standard



Meet "The Monster". A new dimension in tunneling demolition

WITH THE 800 MODEL, Brokk is breaking way for a whole new field of application when it comes to tunneling projects. Considerably larger than the other machines in the Brokk family, it has an unparalleled capacity that makes it perfect for really heavy and demanding demolition work. The Brokk 800 weighs 11,050 kg without attachment, and has a total reach of a whopping 9.4 meters! The power is equally impressive.

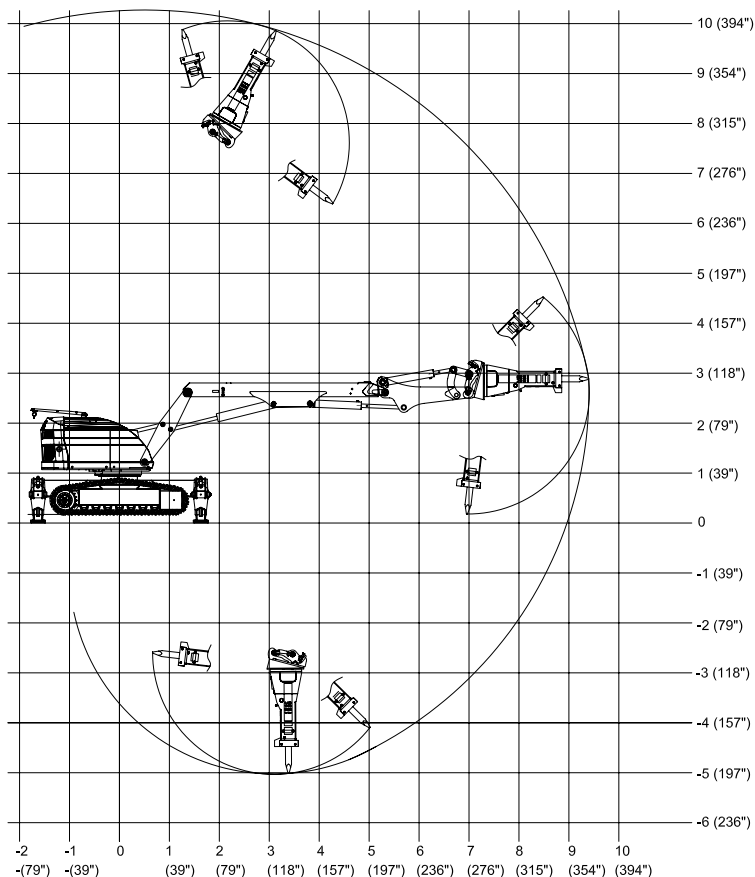
APPLICATIONS

The world's most powerful remote controlled solution for the most demanding tunneling industry work.

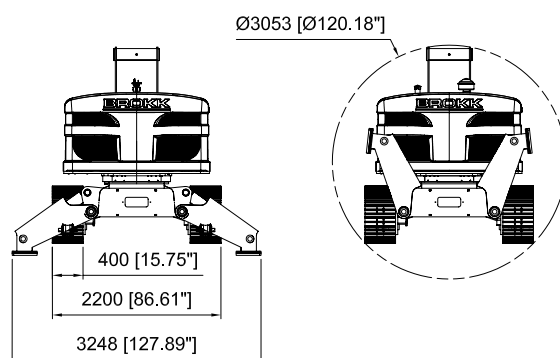
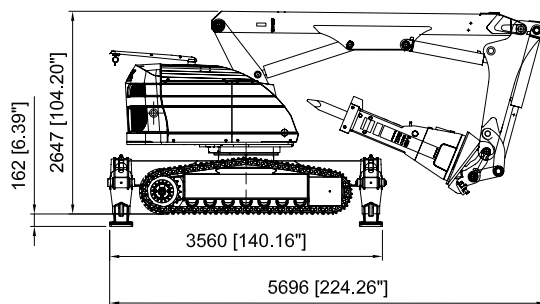
Equipped with the MB 1000 breaker, the Brokk 800 offers just about twice the hitting power of the Brokk 400.

Of course, this "monster" gives the operator the same secure work environment as the smaller Brokk machines. At a safe distance from vibrations and falling debris – in perfect control.

RANGE



SIZE



TECHNICAL DATA

Hydraulic breaker in illustrations

MB1000

Load and stability diagram can be ordered from Brokk AB

Performance

Slewing speed	28 sec/360°
Transport speed, max.	2.1 km/h; 0.6 m/s; 1.3 mph
Incline angle, max.	30°

Hydraulic system

Hydraulic system capacity	165 l; 44 US gal
Pump type	Variable load-sensing piston pump
System pressure to cylinders and motors, max.	20 MPa; 2,901 psi
System pressure, increased to attachment, max	25.0 MPa; 3,626 psi
Flow max	Diesel/50Hz el. motor 140 l/min 37 US gal/min
	60Hz el. motor 168 l/min 44 US gal/min

Electric motor*

Type	ABB
Output	45 kW; 60,4 hp

Diesel performance, option*

Type	Four-cylinder, water-cooled, 4-stroke engine
Output at 2,600 rpm (SAE J1995)	72.8 kW; 97.6 hp
Fuel tank capacity	70 l; 22 US gal
Engine oil volume with and without filter change	13.2 l; 3.49 US gal
Coolant volume	9 l; 2.38 US gal
Freezing point	-40°C; -104°F

Control system

Control type	Portable control box
Signal code	Digital
Transfer	Cable/Radio

Weight

Weight of basic machine excluding attachment 11,050 kg; 24,350 lbs

*Option: Diesel motor

TOOLS

