

**BROKK**

**800**

NEW 2011!

Process



## A true Process Monster. Remote controlled

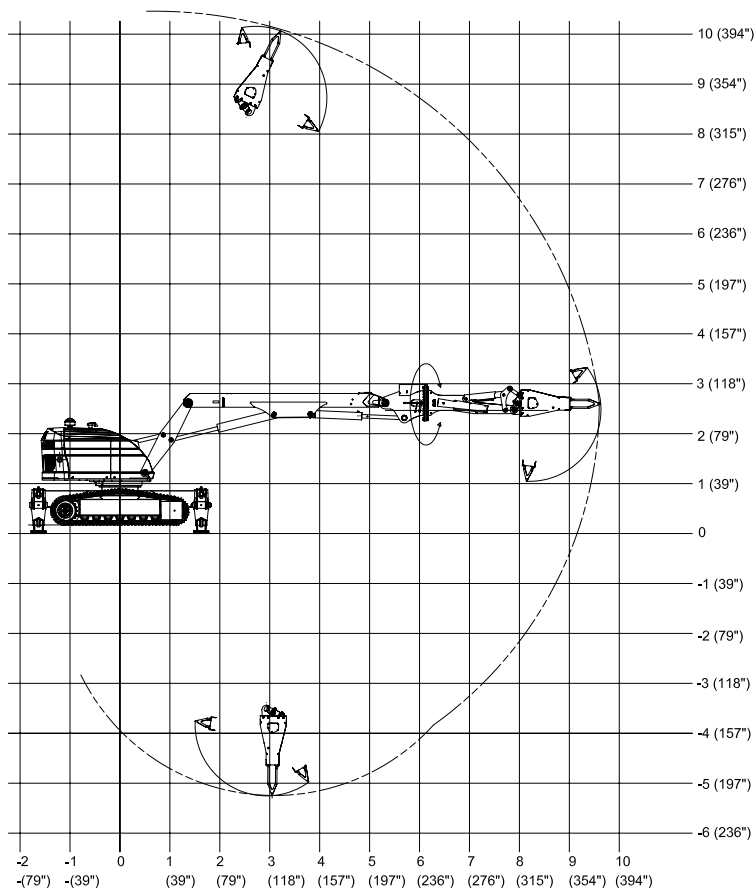
**THE BROKK 800** is a truly giant coming from the family of dwarfs. With a weight of 11,290 kg without attachment, an arm 3 with 360 degrees rotation and a total reach of a whopping 9.6 meters (!) it breaks way for a whole new field of application for the metal processing industry. Considerably larger than the other machines in the Brokk family, it has an unparalleled capacity that makes it perfect for really heavy and demanding demolition and maintenance work.

The power is equally impressive. Equipped with the new process breaker with its special heat protection covering the hydraulics, it is a welcomed superman for working with hot ladles, converters, runners, furnace work etc. You can even bend and break with this unique Brokk breaker. Of course, this "monster" gives the operator the same secure work environment as the smaller Brokk machines: In perfect control and at a safe distance from heat, vibrations and falling debris.

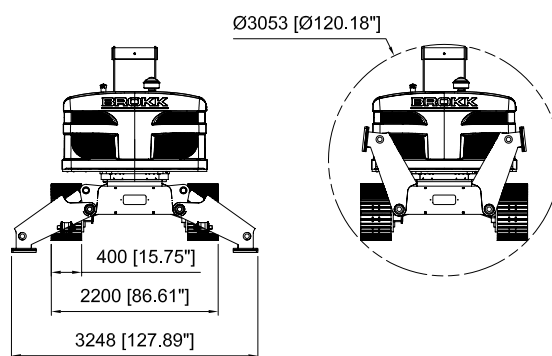
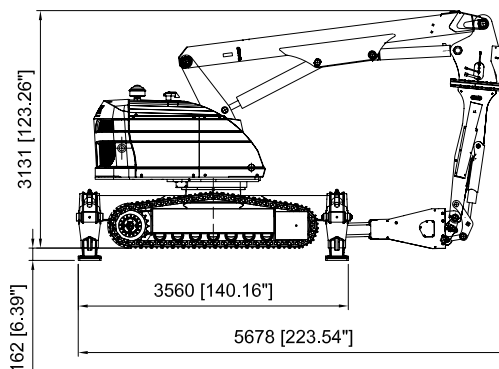
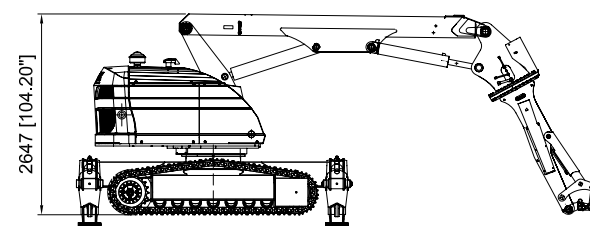
### **APPLICATION**

A versatile giant for different demolition and maintenance work at all kind of metal processing industries.

## RANGE



## SIZE



## TECHNICAL DATA

Hydraulic breaker in illustrations

SB302

Load and stability diagram can be ordered from Brokk AB

### Performance

Slewing speed	28 sec/360°
Transport speed, max.	2,1 km/h; 0,6 m/s; 1,3 mph
Incline angle, max.	30°

### Hydraulic system

Hydraulic system capacity	165 l; 44 US gal
Pump type	Variable load-sensing piston pump
System pressure to cylinders and motors, max.	20 MPa; 2 901 psi
System pressure, increased to attachment, max	25.0 MPa; 3 626 psi
Flow max	Diesel/50Hz el. motor 140 l/min 37 US gal/min
	60Hz el. motor 168 l/min 44 US gal/min

### Diesel performance

Type	Four-cylinder, water-cooled, 4-stroke engine
Output at 2600 rpm (SAE J1995)	72,8 kW; 97,6 hp
Fuel tank capacity	70 l; 22 US gal
Engine oil volume with and without filter change	13,2 l; 3,49 US gal
Coolant volume	9 l; 2,38 US gal
Freezing point	-40°C; -104°F

### Control system

Control type	Portable control box
Signal code	Digital
Transfer	Cable/Radio

### Weight

Weight of basic machine excluding attachment 11,290 kg, 24,890 lbs

### Electric motor\*

Type	ABB
Output	45 kW; 60,4 hp

\*Option: Electric motor

## TOOLS

